

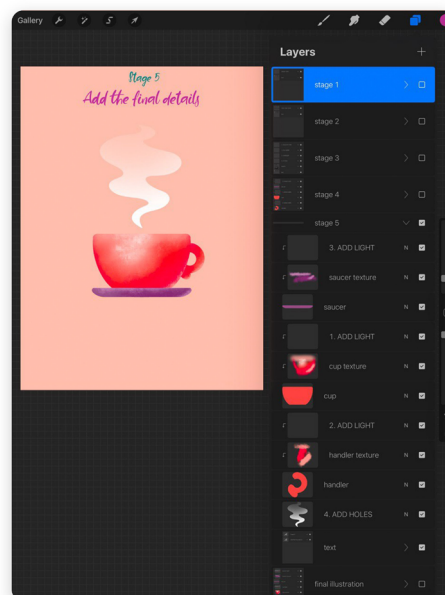


Worksheet Guide

There's a Procreate 'Do it yourself' file that comes along with this masterclass. Download it, open in Procreate app and use it to go through all the steps on your own.

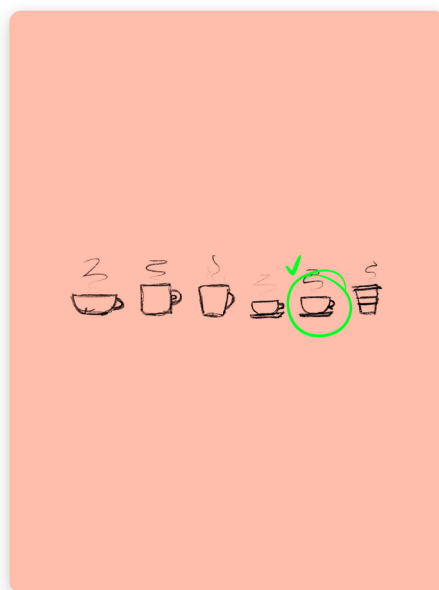
How to use

Begin with the stage number one. After you complete it, you can move on to the next one, in order to do that hide the 'Stage 1' group (click on the checkmark icon on the layer) and display the 'Stage 2' group. For your convenience, I've put specific names for the layers that you need to edit. This file is intended to make you practice each step separately in order to make sure you're on the right track.



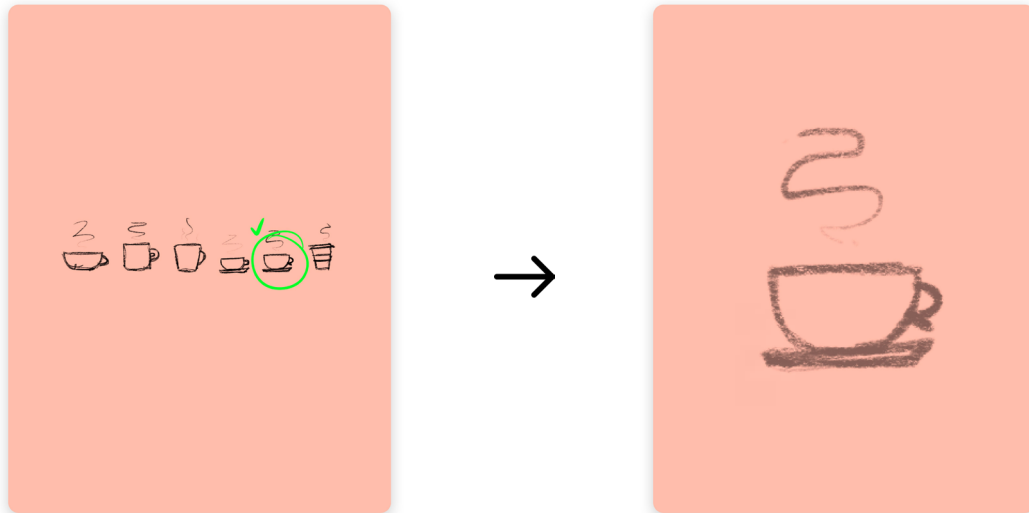
Stage 1: draw a few rough sketches of the cup

Use the Technical Pencil brush and black color. Try as many different shapes as possible until you will find one that you like.



Stage 2: choose one sketch and prepare it

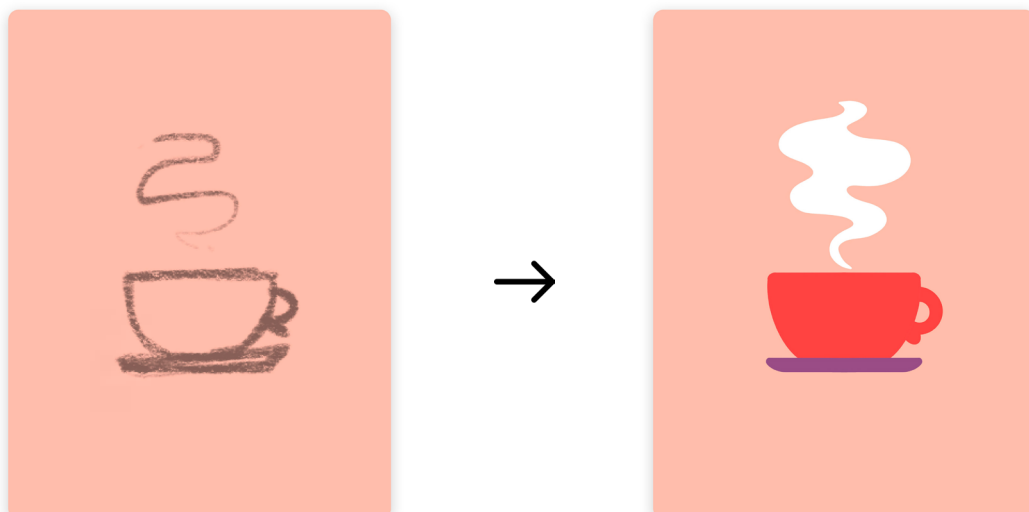
- Select one sketch with Selection Tool and Copy+Paste it on the new layer
- Delete the layer with the other cups
- Increase the size of the chosen sketch using Transform Tool
- Centralize and rotate it if needed
- Make the sketch transparent to use it as a reference (Click on the 'N' letter on the sketch layer in the Layers and change the opacity)



Stage 3: create the main shapes

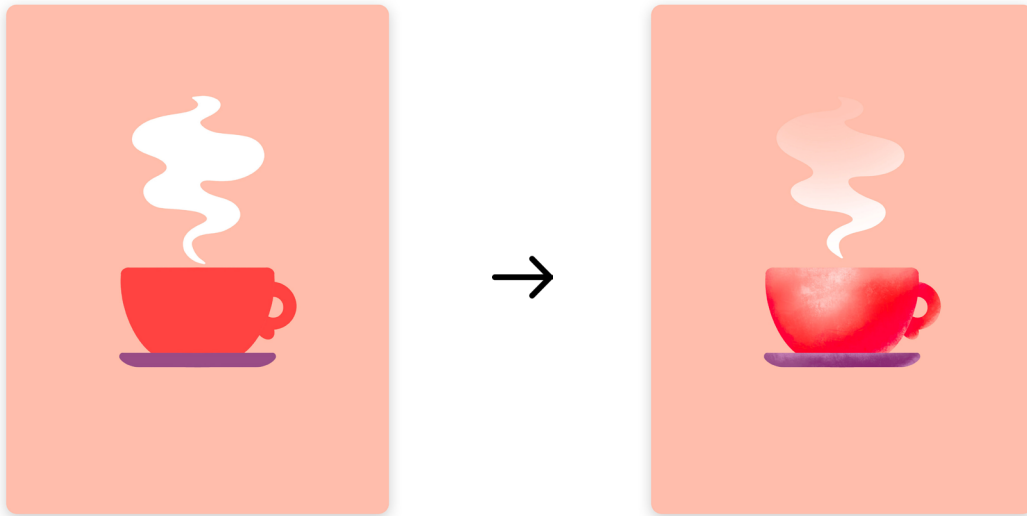
- Go to Canvas Settings and activate Drawing Guide
- Click on Edit Drawing Guide, toggle Assisted Drawing, go to Symmetry tab and click Done
- Select the Studio Pen brush and draw the cup and the saucer using Symmetry tool
- Add the handle to the cup
- Draw the steam

Note: Don't forget to use QuickShape feature to create really smooth lines



Stage 4: add the textures

- Select the Grange brush
- Add shadows, highlights and reflecting lights to all the objects on the layers with Clipping Mask activated
- Using Eraser tool with the Soft Brush make the steam fade to the top



Stage 5: add the final details

- Add bright highlights to the edges of the cup, handle and saucer using the Studio Pen brush
- Add a few holes to the steam with Eraser Tool
- Create a shadow from the cup:
 1. Make a copy of the cup, handle, saucer layers and move the copies to the bottom in the layer list
 2. Merge the copied layers
 3. Activate Alpha Lock and using any big brush recolor the silhouette in the color of the shadow
 4. Flip it vertically with Transform Tool and place it right below the saucer
 5. Distort the shadow and make it transparent

